



深圳市晶彩智能有限公司
Shenzhen Jingcai Intelligent Co., Ltd

3.5 inch SPI Module

JC3248S035



目录

Product Description.....	2
Product Features.....	2
Product Parameters.....	3
Interface Description.....	4
Hardware Configuration.....	5
Working principle.....	6



Product Description

The LCD module uses a 4-wire SPI communication method with a driver IC of ILI9488 with a resolution of 320x480 and a touch function (optional). The module includes an LCD display, backlight control circuitry, and touch screen control circuitry.

Product Features

- 3.5-inch color screen,support 65K color display,display rich colors
- 320X480 resolution with optional touch function
- Using the SPI serial bus, it only takes a few IOs to illuminate the display
- Easy to expand the experiment with SD card slot
- Military-grade process standards, long-term stable work
- Provide underlying driver technical support

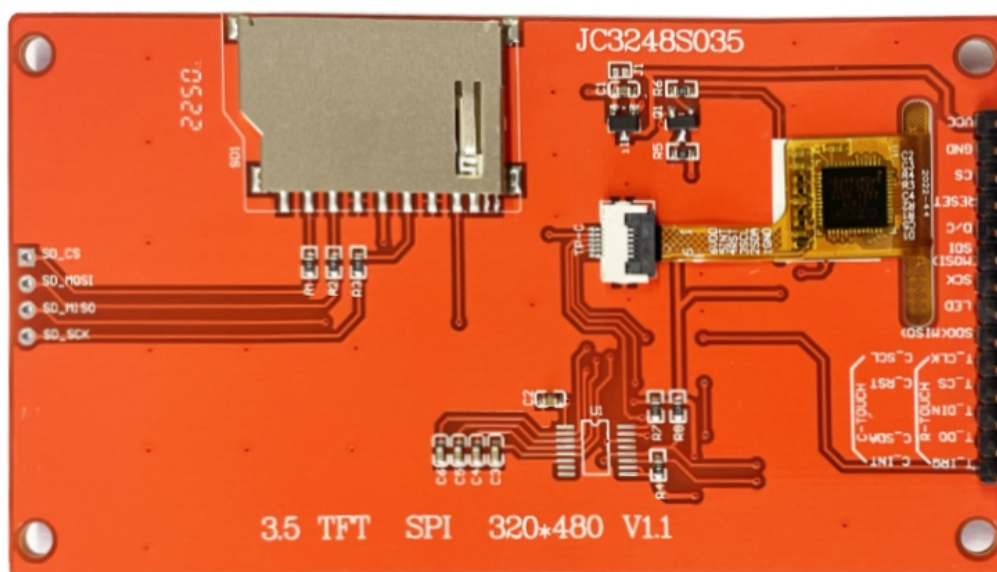


Product Parameters

Name	Description	remark
Dis Play color	RGB 65K color	
SKU	without touch: JC3248S035-N	
	Resistive touch: JC3248S035-R	
	capacitive touch: JC3248S035-C	
Screen size	3.5inch	
Type	TFT	
Driver IC	ILI9488	
Resolution	320*480(Pixel)	
Module interface	4-wire SPI interface	
Active area	73.44x48.96 (mm)	
Module PCB Size	99.0x54.9 (mm)	
Angle of view	>60°	
Operating Temperature	-20℃~70℃	
Storage Temperature	-30℃~80℃	
Operating Voltage	3.3V-5V	
Power Consumption	About 100mA	
Product weight	About 45g	



Interface Description



Number	Module Pin	Pin Description
1	VCC	LCD power supply is positive (3.3V~5V)
2	GND	LCD Power ground
3	CS	LCD selection control signal
4	RESET	LCD reset control signal



5	D/C	LCD register / data selection control signal
6	SDI	LCD SPI bus write data signal
7	SCK	LCD SPI bus clock signal
8	LED	LCD backlight control signal (high level lighting, if you do not need control, please connect 3.3V)
9	SDO (MISO)	LCD SPI bus read data signal (can not be connected if not needed)
The following is the touch screen signal line wiring, if you do not need to touch function or the module itself does not have touch function, you can not connect them		
10	T_CLK	Touch screen SPI bus clock pin
11	T_CS	Touch screen chip select control pin
12	T_DIN	Touch screen SPI bus write data pin
13	T_DO	Touch screen SPI bus read data pin
14	T_IRQ	Touch screen interrupt detection pin

Hardware Configuration

The LCD module hardware circuit comprises two parts: an LCD display control circuit and a backlight control circuit.

The LCD display control circuit is used to control the pins of the LCD, including control pins and data transfer pins.



The touch screen control circuit can control touch screen touch corresponding and touch coordinate reading (touch screen optional).

The backlight control circuit is used to control the backlight to be on and off. Of course, if the backlight is not required to be controlled, the backlight control pin can be directly connected to the 3.3V power supply without using the circuit.

Working principle

1. Introduction to ILI9488 Controller

The ILI9488 controller supports a maximum resolution of 320*480 and a 345600-byte GRAM. It also supports 8-bit, 9-bit, 16-bit, and 18-bit parallel port data buses. It also supports 3-wire and 4-wire SPI serial ports. Since parallel control requires a large number of IO ports, the most common one is SPI serial port control. The ILI9488 also supports 65K, 262K, 16.7M RGB color display, display color is very rich, while supporting rotating display and scroll display and video playback, display in a variety of ways.

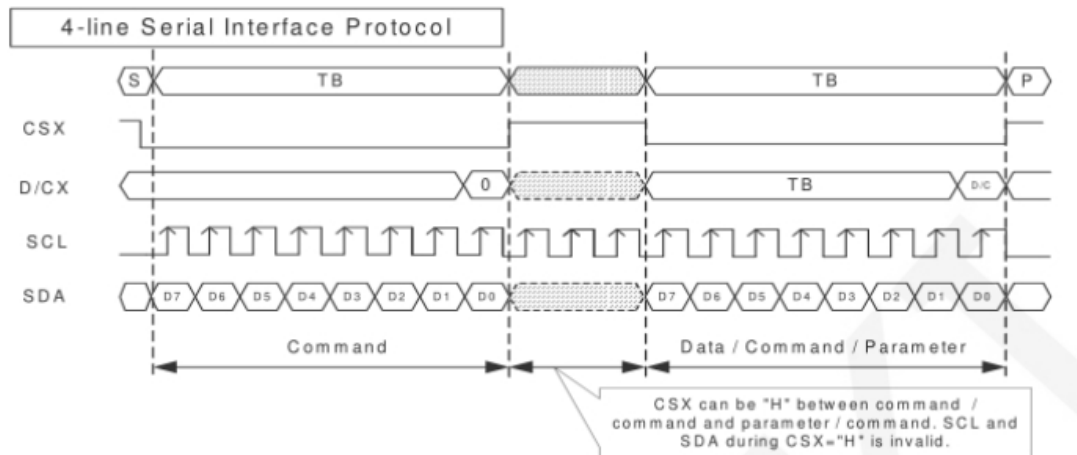
The ILI9488 controller uses 18bit (RGB666) to control a pixel display, so it can display up to 262K colors per pixel. The pixel address setting is performed in the order of rows and columns, and the incrementing and decreasing direction is determined by the scanning mode. The ILI9488 display method is performed by setting the address and then setting



the color value.

2. Introduction to SPI communication protocol

The 4-wire SPI bus write mode timing is shown in the following figure:



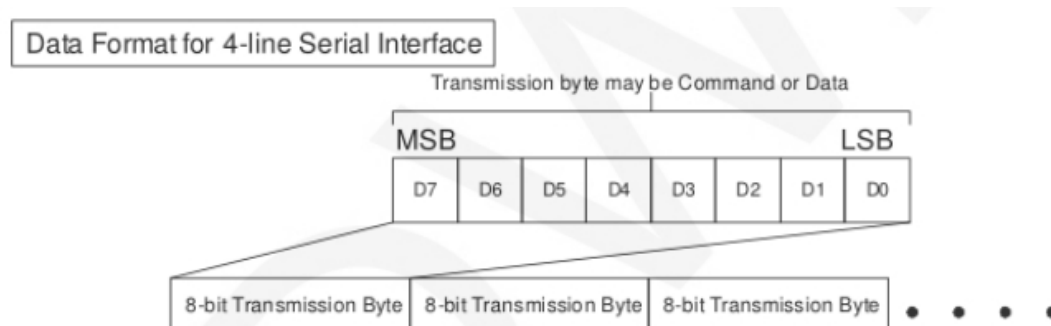
CSX is a slave chip select, and the chip is enabled only when CSX is low.

D/CX is the data/command control pin of the chip. When DCX is low, the command is written. When it is high, the data is written.

SCL is the SPI bus clock, and each rising edge transmits 1 bit of data;

SDA is the data transmitted by SPI, and it transmits 8-bit data at a time.

The data format is as shown below:



The high position is in front and transmitted first.



深圳市晶彩智能有限公司

Shenzhen Jingcai Intelligent Co., Ltd

For SPI communication, the data has a transmission timing, that is, a combination of clock phase (CPHA) and clock polarity (CPOL):

The CPOL level determines the idle state level of the serial synchronous clock, CPOL = 0, which is low. CPOL does not have a lot of impact on the transport protocol;

The level of CPHA determines whether the serial synchronous clock is acquired on the first clock transition edge or the second clock transition edge.

When CPHL = 0, data acquisition is performed on the first edge of the transition;

The combination of the two becomes the four SPI communication methods. SPI0 is usually used in China, that is, CPHL = 0, CPOL = 0.